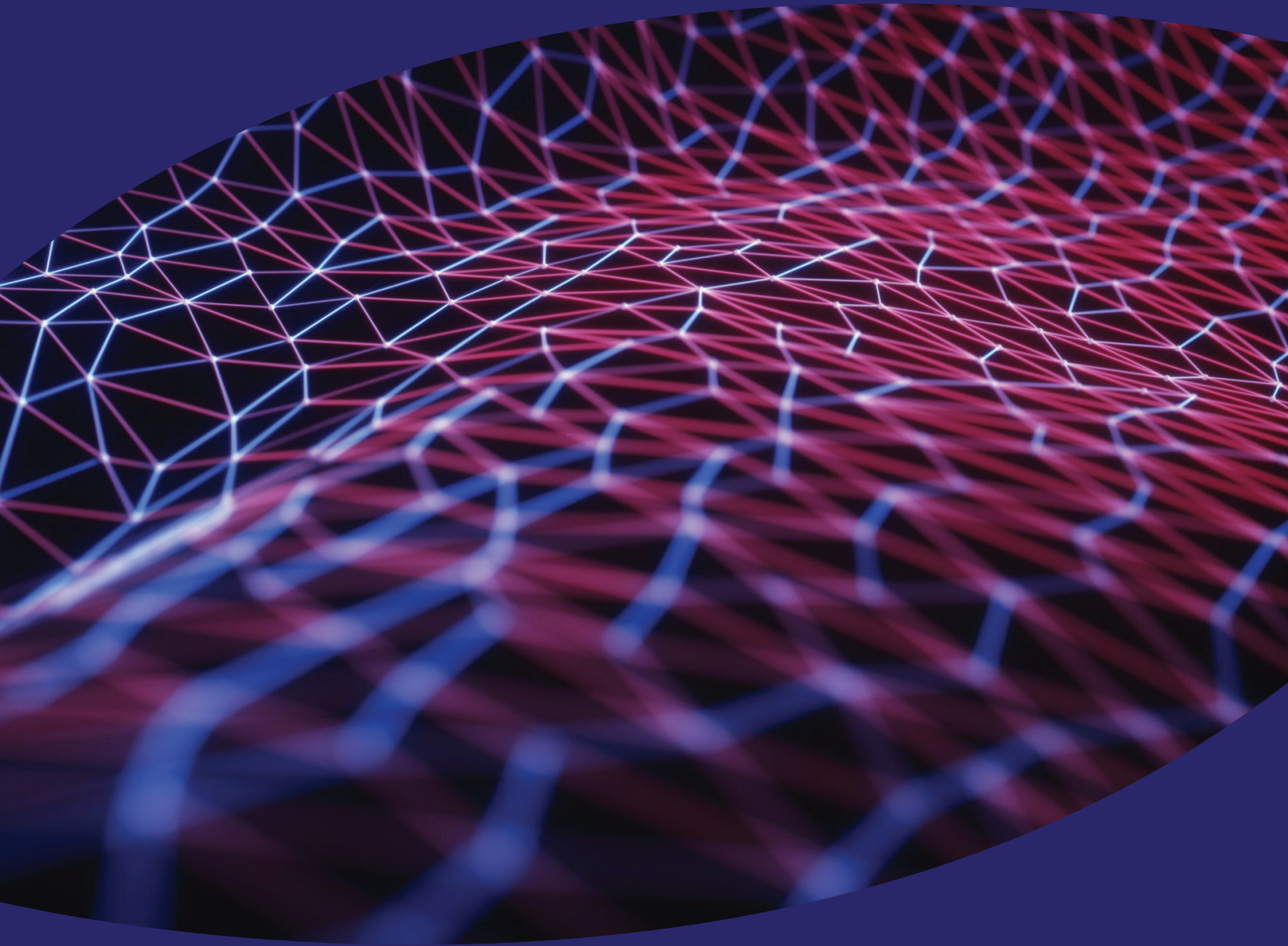


# IISCIENCE

Innovative Imaging Science



More Clarity, Faster Imaging, Less Budget

[sales@iiscience.com](mailto:sales@iiscience.com) | [www.iiscience.com](http://www.iiscience.com)

# EYEMERA FUNDUS CAMERA



Image sensor	Color	High sensitivity CCD sensor @ visible range
	Mono	High QE at NIR region
Image resolution	3 microns for mouse, 6 microns for Rat	
# of pixels	1000 x 1000 pixels	
Field of view	45 degree	
Imaging frame rate(FPS)	3 FPS - 30 FPS	
Imaging modalities	Color	Color image/FA image
	Mono	Mono image/FA image/ICGA image
CCD dynamic range	65dB	
Dark current noise	< 1 e-/s	
Readout noise	8.5 e	
Exposure control/range	Manual / 5.4 us to 8 min	
Data format	Tiff, JPEG, BMP	
Data interface	USB2.0	
Objective lens	One lens for Rodents	
Light source	Color	6500K white LED and Blue LED
	Mono	6500K white LED / NIR LD

# EYEMERA OCT CAMERA



Image resolutions	Axial	2.3 $\mu\text{m}$
	Lateral	2.0 $\mu\text{m}$
Imaging modality	Spectral Domain OCT	
A scan rate	80,000 A-scans/sec	
B scan rate	50 B-scans/sec	
Field of view	60 degree	
Center wavelength	870nm	
Sensitivity	100dB	
Scan patterns	Horizontal/Vertical/Radial/Circular/Volume	
Objective lens	Mouse & Rat lens and bigger eye lens	
Animal Bed	6 degrees of freedom stage	
Computer	intel core CPU Laptop computer/Window OS	

# CNV IMAGING SYSTEM

<b>SLO Imaging Module</b>	
Objective lens	Mouse or Rat
Image resolution	256x256 (low) and 512x512 (high)
Image size	60 degree FOV
Image frame rate	1 (high) & 2 Hz (low)
Imaging modality	Basic system-mono imaging & advanced system - FA, Angio and ICGA
Data format	JPEG
Data interface	BNC 50 Ohm
Light source	630nm Laser diode

<b>Detector Module</b>	
Imaging sensor	APD
Detector material	UV-Enhanced Silicon APD
Wavelength range	200 to 1000 nm
Max APD Sensitivity	25 A/W @600 nm, M=50
Detector active area	0.5 mm
Max input power	1 mW
Integrate noise (DC-10 MHz)	0.28 nW (RMS)
Electrical output, Impedence	BNC, 50 ohm
DC offset Electrical output:	less than +/- 3 mV

<b>Photocoagulation Laser Module</b>	
Wavelength	532 nm multimode LD
Optical power	0 - 500 mW
Pulse duration	10 msec - 1000 msec
Operation	Single pulse
Interface	Software controlled

# HIGH POWER LIGHT BOX



- **Dual band LEDs:**
  - 6500K White LED (Lumens SSD 90)
  - Blue Color LED
- Optical output power @ objective lens: 0 ~ 0.9 W @ 532nm
- **Selection switch:**
  - White light color imaging
  - Blue light Angiography imaging
- Rotational knob to adjust light intensity for each light source
- Electrical power: AC 100/220 Volts
- 12 volts DC outlet
- Size: 12" x 11.5" x 4.5"
- Weight: 1.5 Kg

# IMAGING BED FOR SMALL ANIMALS

- Material: Methylcellulose plastic
- Height adjustment: 4.5"
- 6 degrees of freedom
- Size: 10" x 6.0" x 5.0"
- Weight: 0.5 Kg

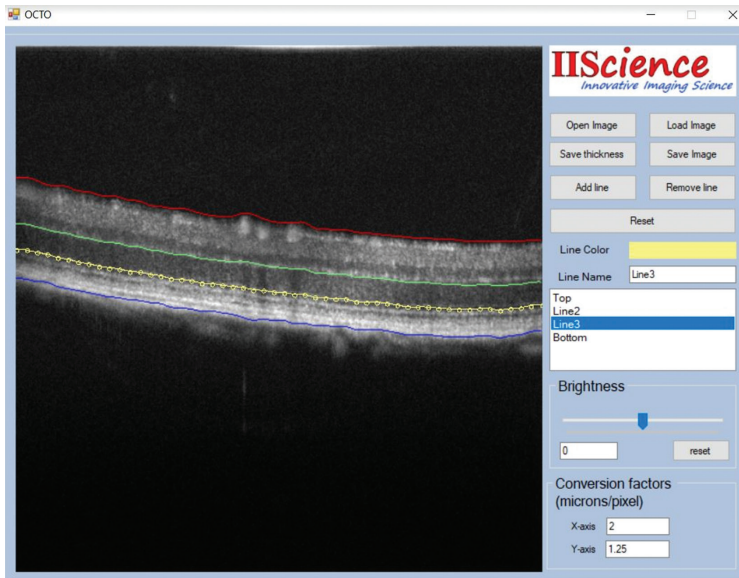


# SCANNING LENS FOR OCT AND SLO

- 60 degree FOV
- 5 degree optical angle
- 3 mm input beam diameter
- SM1 Adaptor available
- Customized lens available

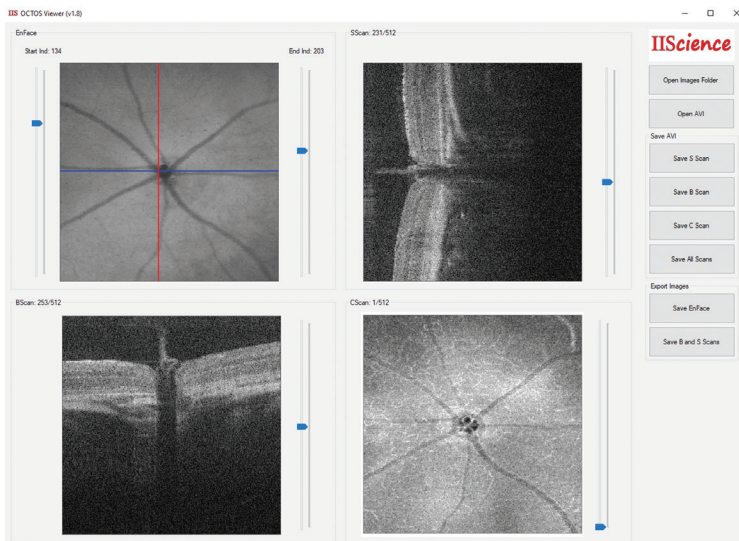


# INTUITIVE OCT IMAGE ANALYSIS & 3D VIEWER SOFTWARE



## OCTOS Analysis

- Automatic segmentation of the NFL
- Manual segmentation for inner layers
- Very easy to deform layer curves
- Easy to add and remove layer lines
- Automatic calculation of the inner layer thickness
- Save B scan image with segmented layers
- User friendly GUI



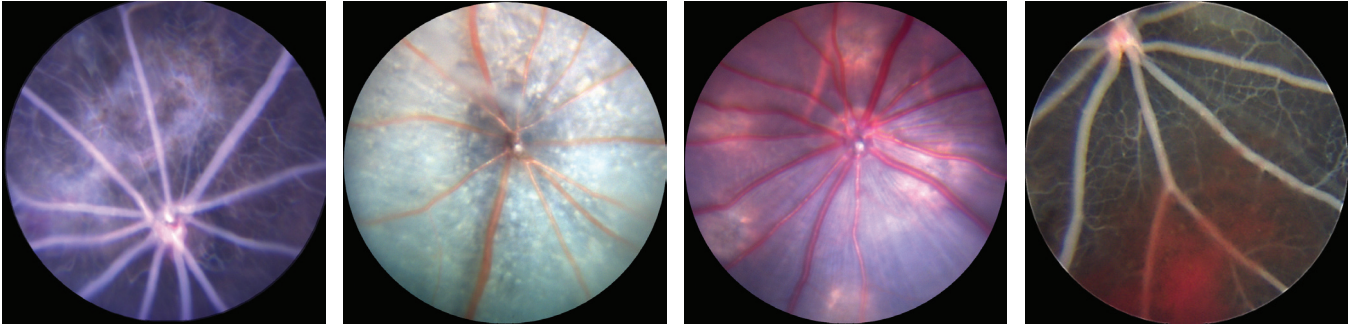
## OCTOS Viewer

- Automatic *En-Face* image calculation from the volume scans
- Viewing 3-dimensional cross section images
- *En-Face* image guided B scan maps
- Viewing Fundus images of each layer
- Save the *En-Face* images with lines of the scans
- Easy to use

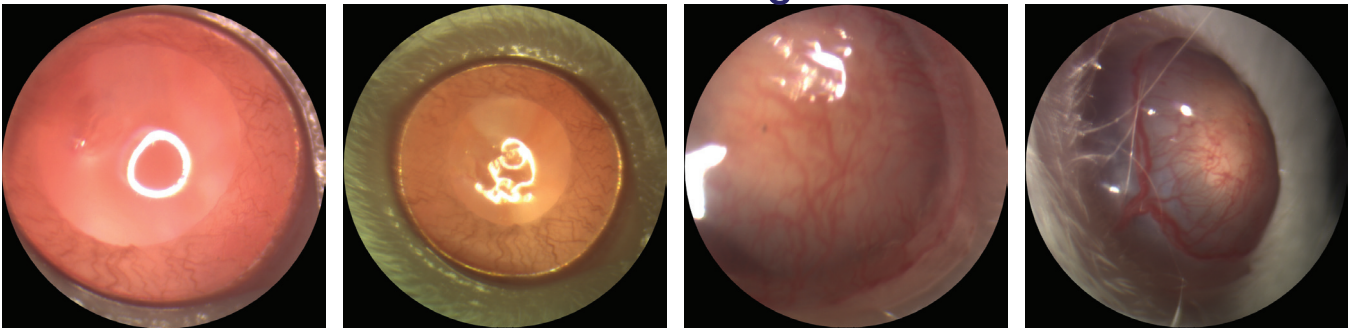
## OEM & Custom Imaging System Development

We always work with OEMs to adapt our design to your unique ideas and the system that you want. We offer all accessories including customized lens, animal bed, customized light sources and software.

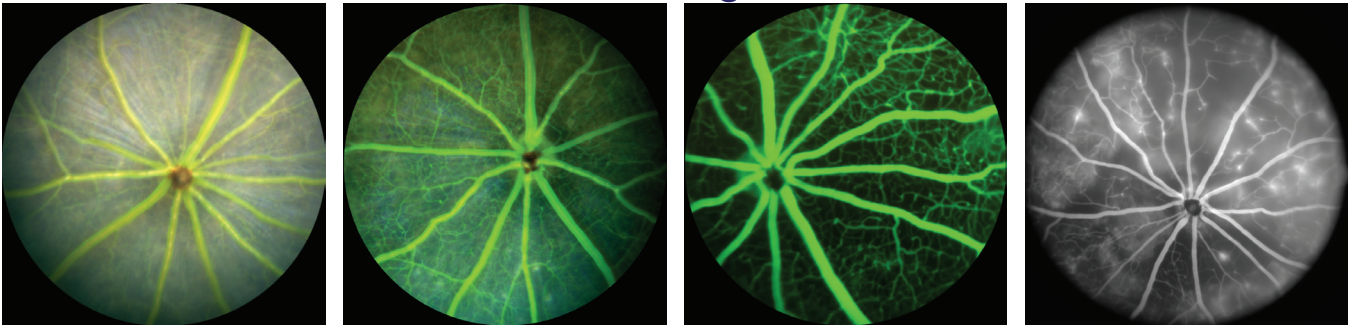
## Color retinal images



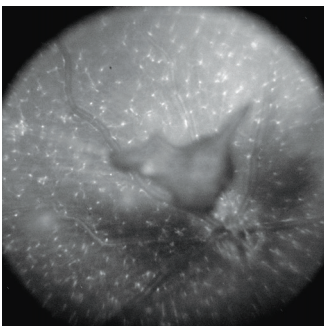
## Cornea images



## FA images

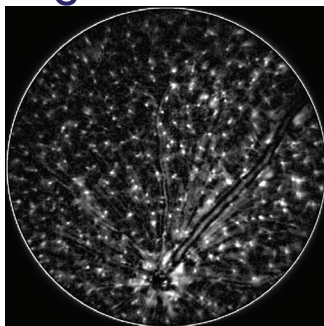


## GFP images



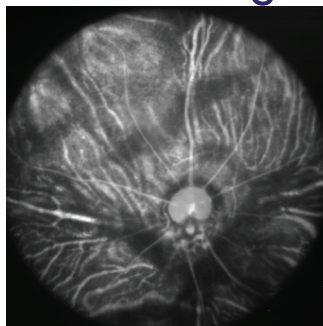
Fish

## ICGA image

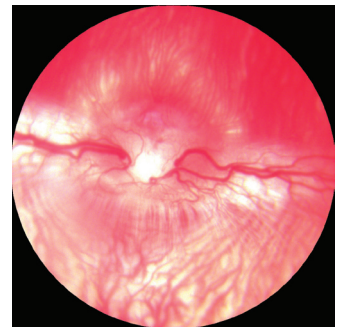
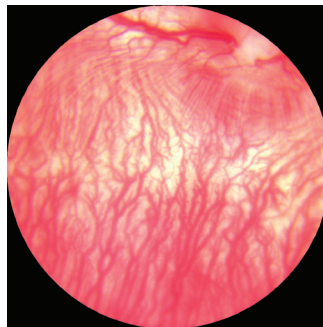
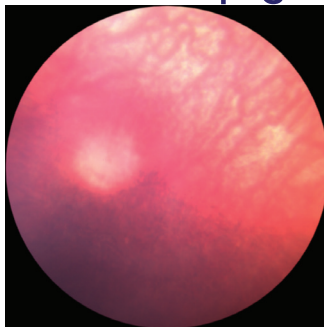
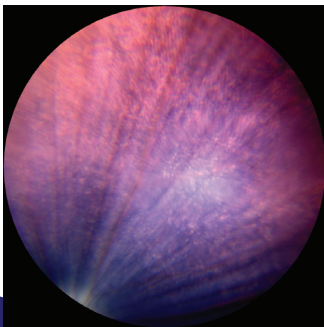
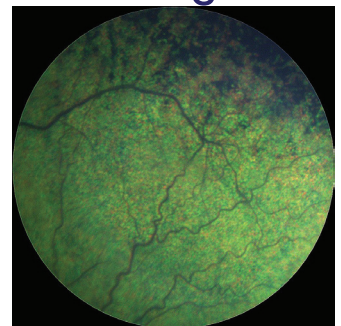


Guinea pig

## Dog

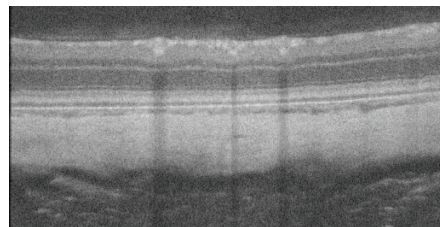
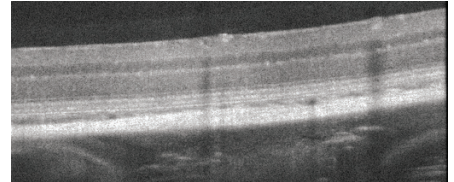
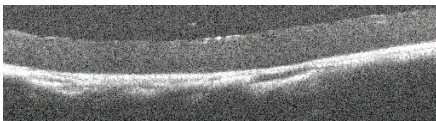
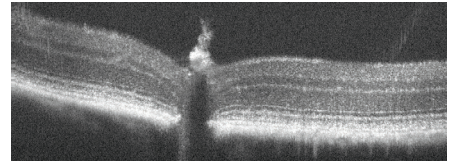
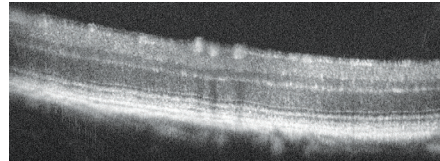
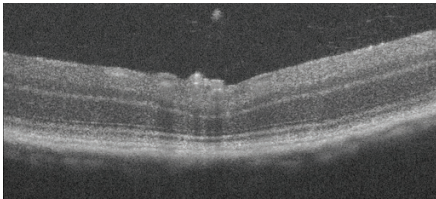
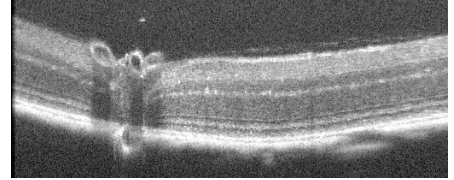
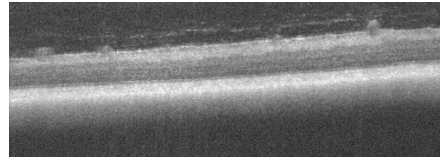
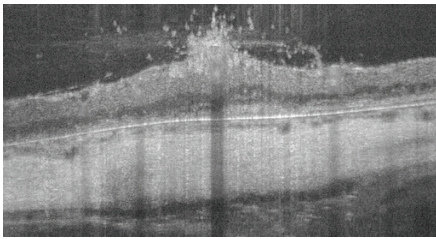
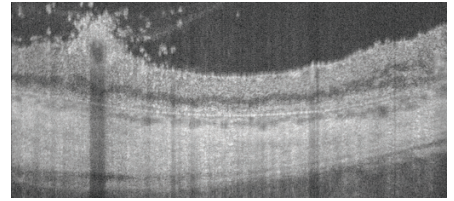
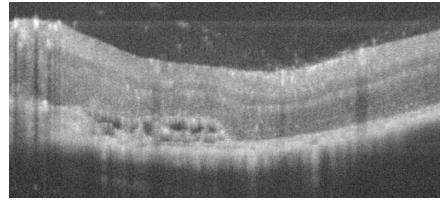
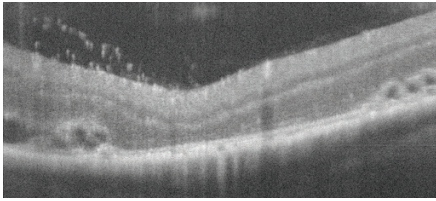


Rabbit





# OCT images



# IISCIENCE

Innovative Imaging Science

PLEASE CONTACT US TO GET A QUOTE!

[sales@iiscience.com](mailto:sales@iiscience.com) | [www.iiscience.com](http://www.iiscience.com)